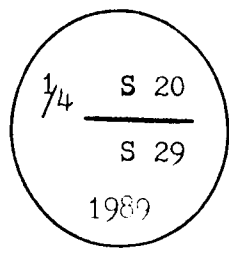


CERTIFIED LAND CORNER RECORDATION

'89 MAY 8 PM 4 38

DESCRIPTION OF CORNER EVIDENCE FOUND, AND ORIGINAL RECORD (if known)



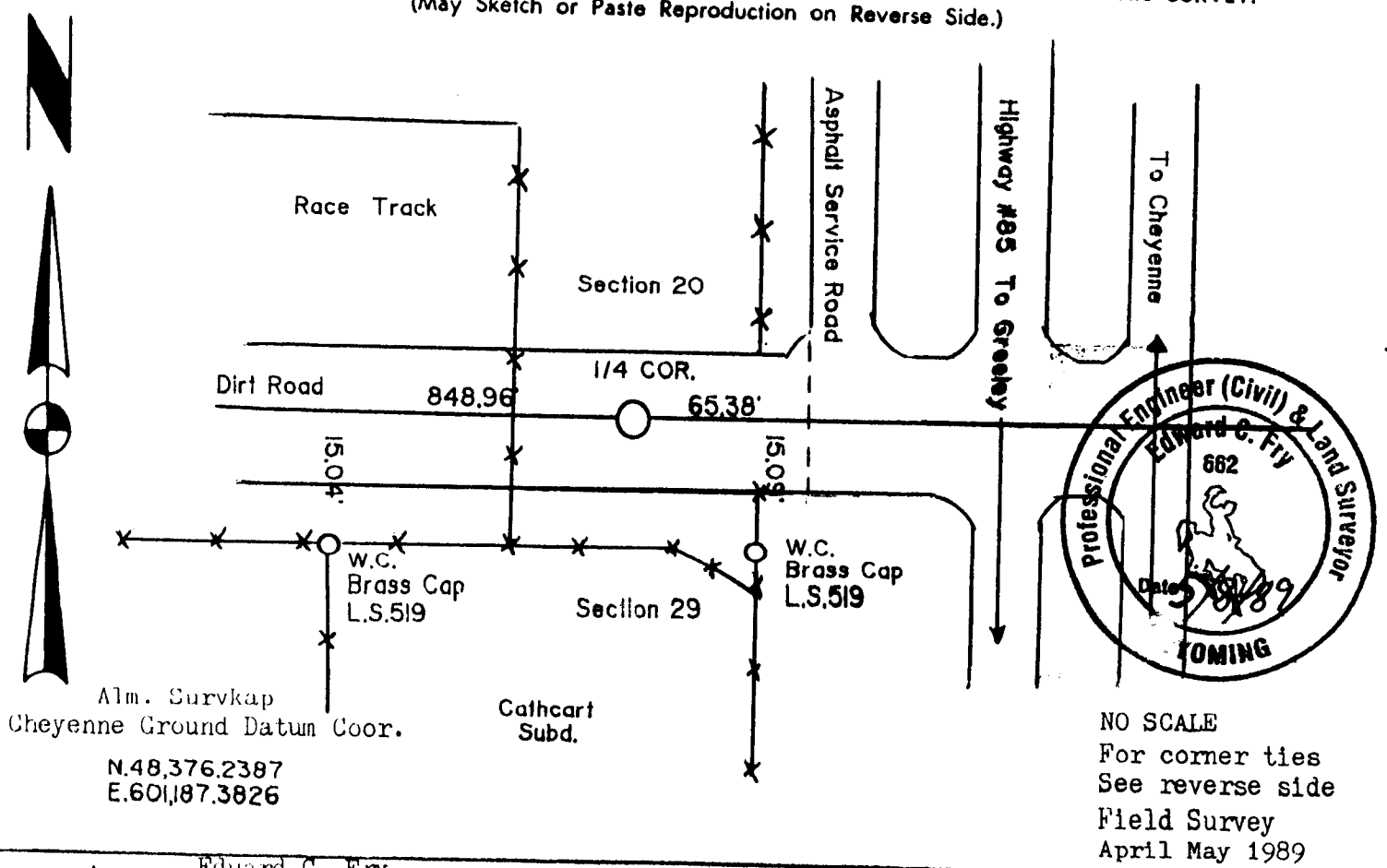
Found no evidences of corner. The G.L.O. monument is described as a granite stone 15"x9"x6" set in the year of 1870.

T 13 N R 66 W

DESCRIPTION OF MONUMENT AND ACCESSORIES ESTABLISHED TO PERPETUATE THE ORIGINAL LOCATION OF THIS CORNER:

Set a 2"x24" O.D. galvanized iron pipe with a aluminum survkap with one quarter and section numbers stamped on it. Set twelve inches below the road grade. Used single proportional measure to located the quarter corner.

SKETCH, WITH COURSE AND DISTANCE TO ADJACENT CORNER IF DETERMINED IN THIS SURVEY. (May Sketch or Paste Reproduction on Reverse Side.)



I, Edward C. Fry certify that I have carefully ~~performed~~ reviewed the work done on the diagrammed corner as reported on this recordation form and approve the same.

Edward C. Fry
Signature of Surveyor

P.E./L.S. #662

Registration No.

STATE OF WYOMING,
Office of Clerk and Recorder,
County of _____

This "corner record" was filed for record on the _____ day of _____, 19____, was noted on the cross-index plat and is assigned page No. _____, in book No. _____.

County Official			
Cross Index No. <u>R-7</u>	T. <u>13</u>	R. <u>66</u>	Mer.
_____	T. _____	R. _____	Mer.
_____	T. _____	R. _____	Mer.
_____	T. _____	R. _____	Mer.
_____	T. _____	R. _____	Mer.
_____	T. _____	R. _____	Mer.
_____	T. _____	R. _____	Mer.
_____	T. _____	R. _____	Mer.

